

OMNIPRO

Cummins Fire Pump



1. Unpack Components

- Unpack the monitor, antenna, and data and power cable.
- Inspect all components to ensure there is no shipping damage.

2. Installing Antenna

- Place the antenna vertically at the center of the roof of the generator.
- Route the antenna cable into the area of the generator control.
- Ensure a drip loop lower than the monitor to prevent water from running down the antenna cable into the monitor connection.

3. Attach the Antenna Cable:

- Attach the antenna cable to the front of the monitor and tighten thumb tight.

4. Attaching the Monitor.

- Attach the monitor via its magnetic feet, on top of the engine controller or another appropriate location.
- Horizontal surfaces are best, but the unit may be mounted vertically or even upside down if necessary.

***Note: If mounted vertically, install the monitor with the cables down to prevent water from entering the enclosure.**

5. Connect the Monitor:

- The monitor can connect to the Cummins Fire Pump Panel following the wiring diagram below.

6. Power On and Check LEDs:

- Turn on the monitor and confirm that the LEDs light up and blink.
- If not, check for power wires at the battery.

7. Confirm Installation:

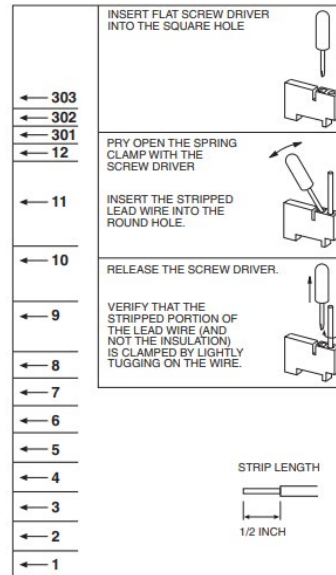
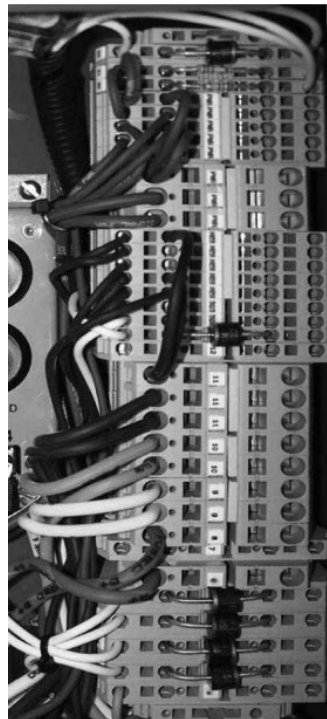
- Allow 15 minutes for the monitor to log into the network. Call OmniMetrix at 770-209-0012 to confirm installation.



OMNIPRO

Cummins Fire Pump

Cummins Fire Pump Wiring Diagram			
SLEEVE COLOR	OMNI WIRE	FUNCTION	TERMINATION
Red	Red	Power In (9-30Vdc)	TB-6
	Black	Ground	TB-11
Blue	Orange	Running	TB-2
	Blue	Common Alarm	TB-302
	Violet	Low Oil Pressure	TB-4
	Gray	High Coolant Temp	TB-5
White	Pink	Not In Auto	TB-1
	Yellow/Brown	ECM Signal B	TB-301
	Yellow	Over Speed	TB-3
Green	Blue/White	Battery B	TB-10
	Green/White	Ground	TB-11



If you have any questions, please call OmniMetrix Tech Support at

770-209-0012 or email at techsupport@omnimetrix.net

