

**TrueGuard-2™ is for use on 12v systems only.**

1. Unpack the OmniMetrix monitor and antenna. The integrated cable includes wires to power (red and black) the monitor as well as wires for the MODBUS input (green and white). Take a moment to inspect all components to verify there is no shipping damage.
2. Place the antenna vertically on the roof of the generator and route the antenna cable into the area of the generator control. The antenna used for transmitting must be installed to provide a separation distance of at least 20 cm from all persons and must not transmit simultaneously with any other antenna transmitters. BE SURE to provide a **drip loop** lower than the monitor to keep water from running down the antenna cable into the monitor connection.
3. Attach the monitor, via its magnetic feet, on top of the engine controller or other appropriate location. Horizontal surfaces are best, but the unit may be mounted vertically or even upside down if necessary. *Note: If mounted vertically, install the monitor with the cables down to prevent water from entering the enclosure.*
4. Route the integrated data/power cable into the generator control enclosure.
5. Instructions for wiring the monitor can be found in the table on the following page.
6. Attach the antenna cable to the front of the monitor and tighten thumb tight.



TrueGuard-2 Monitor

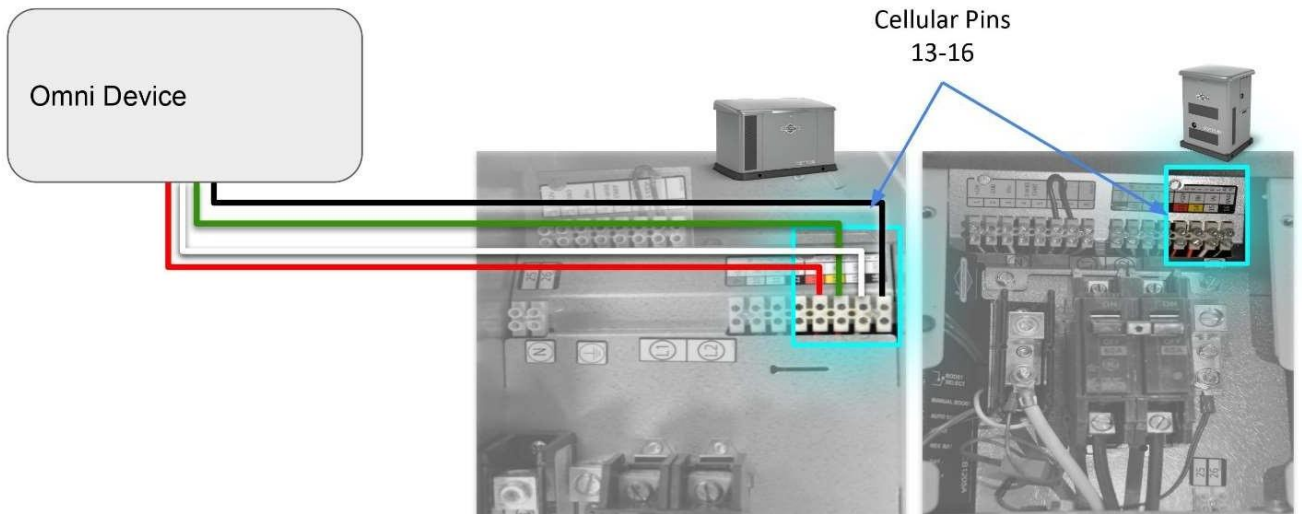
TrueGuard-2 Wiring Table		
OMN WIRE	FUNCTION	TERMINATION
Red	Power In (Generator Battery +)	13
Black	Ground	16
White	RS 485 A	15
Green	RS 485 B	14

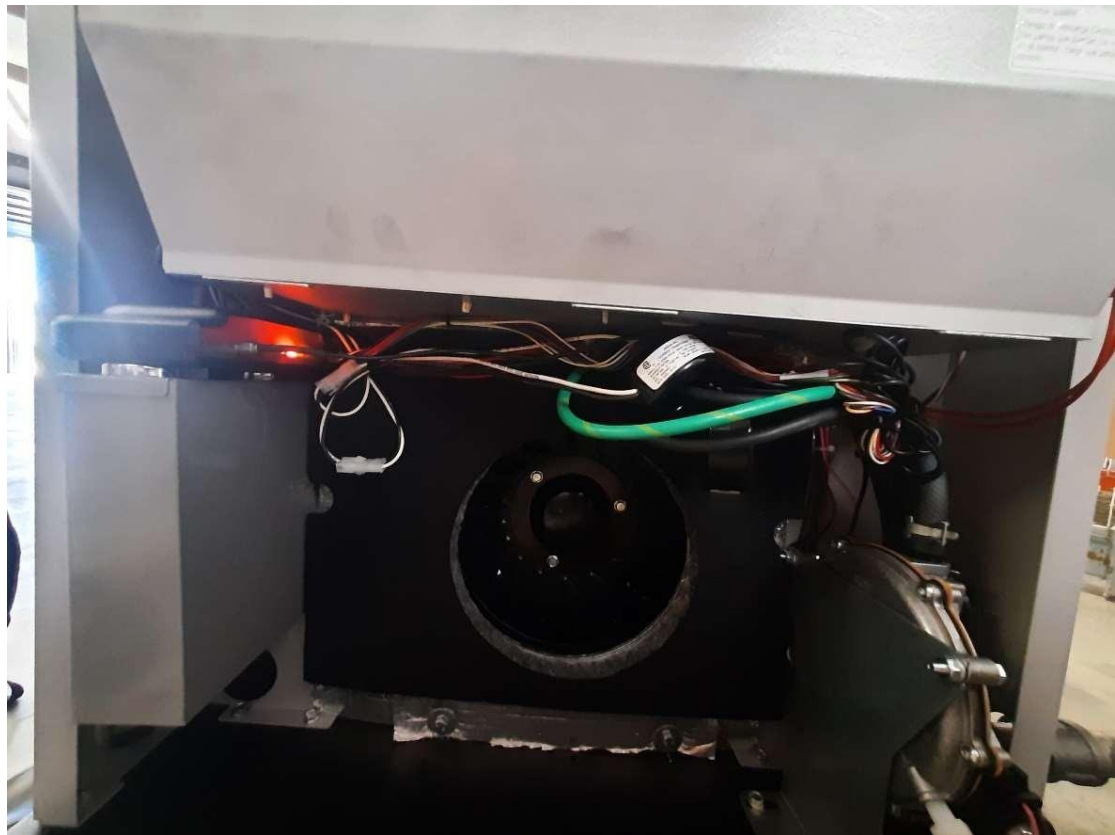
\*If connections already exist on these terminals, contact OmniMetrix Technical Support before continuing installation.

Briggs and Stratton Fortress GC 1031 / 1032 Controller Interface shown below:

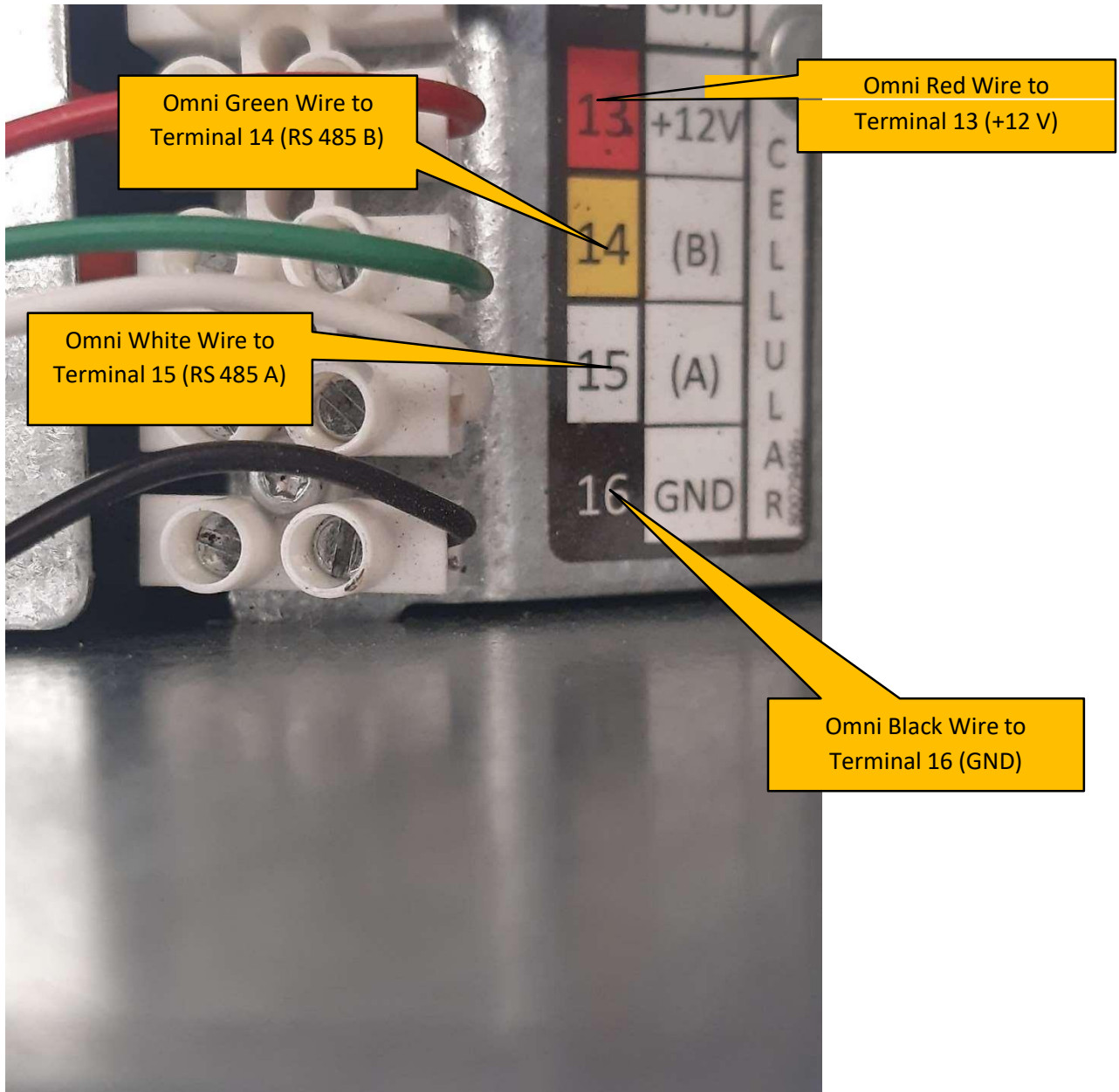


## Omni Connections Generator w/ GC 1031/ GC 1032





While it is possible to wire to the back of the control, it is easier to connect as follows:




Connect the Omni White wire to the Terminal 15 (RS 485 A) and the Omni Green wire to the Terminal 14 (RS 485 B). Connect the OmniMetrix Red wire to Battery + (Terminal 13) , and the OmniMetrix Black wire to Battery GND (Terminal 16) to the Battery terminals on the Battery Charger. This is unswitched and unfused, so a blown generator fuse won't take down OmniMetrix connectivity.

Once the tech on site has the Omni unit wired up with the gen, go and login to OmniView. Look for the omni unit using the Unit ID. As the unit has not been activated yet, the unit might be under “Show Inactive Units”. Now, ask the tech on site to do a test run of the generator. When the tech is doing the test run, you should be able to see changes on OmniView such an active Alarm (Red X under Alarm) and when you click on that active alarm you should be able to “Generator Running” under Nodes in Active State.

For Self-Installation:

1. Logon to [OmniView](#) and search for desired Unit ID
2. Click the Unit ID button
3. Click CONFIGURE then select Pre-Install
4. Fill out the Pre-Installation form and click “Submit Form” or “Submit Form and Open Installation”
5. Install monitoring unit on generator
6. Return to the OmniView main page
7. Select Unit ID > click CONFIGURE tab > then Installation
8. Complete form including the “Description” field then click the Update Raw Data button
9. The three Red Icons “Gen ON/OFF Received, Acceptable Control Monitor Type, and Signal Strength” should turn green
10. Click Submit Finished Install once all fields are green or Save Install if monitoring device will be deployed at a later time
11. After completion the Email ID should state Finished install and an email will be sent stating the Unit ID is now active.

Self-Installation Page shown below:



### Machine Installation Form

[Reset ALL Data](#) [Toggle Tool Tips](#)

Contact Name:

Contact Number:

Contact Email:

Selected Unit:

Control Type:

Monitor Type:

Wiring:

Battery Voltage:

Fuel Type:

Raw Data:

Last time raw data was received by the server: N/A

[Gen on/off received](#) [Acceptable Control Monitor type](#) [Signal Strength:](#)

**Accessories (check all that apply):**

- Fuel Sensor
- Automatic Transfer Switch
- Current Relay Switch
- Current Transfer Switch
- AC Detector
- Power Meter
- Other

**Description:**

Enter description of the unit. This will be added to the email to Tech Support on form completion

[Help Page](#) **For installation support, please dial 770-209-0012.** [Bug Reporter](#)

Email ID:

[Submit Finished Install](#) [Failed Install](#) [Save Install](#) [Update Raw Data](#)

If you have any questions, please call OmniMetrix Tech Support at 770-209-0012 or email at [techsupport@omnimetrixconnect.com](mailto:techsupport@omnimetrixconnect.com).